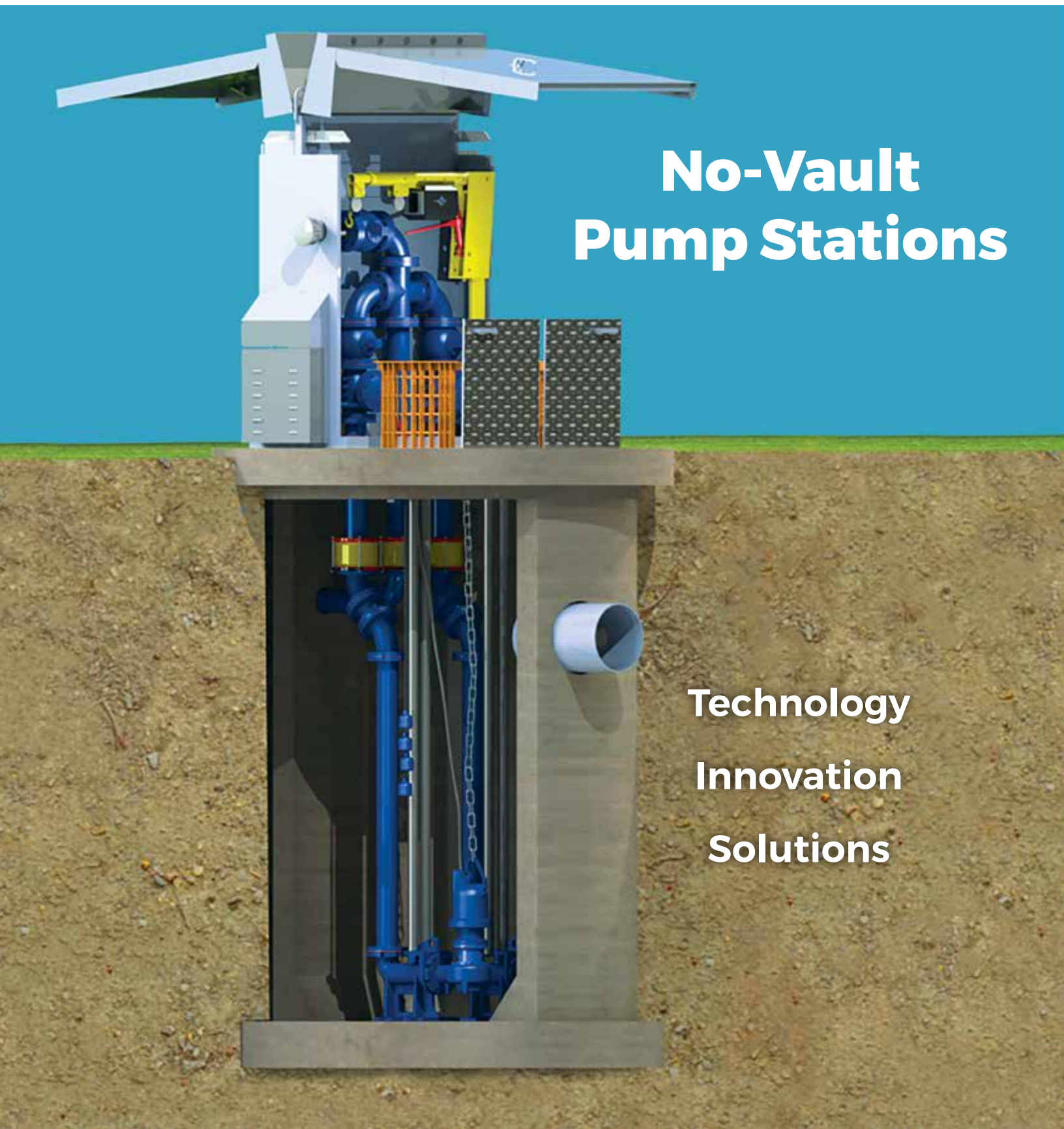


EXCEL

FLUID GROUP, LLC

No-Vault Pump Stations

Technology
Innovation
Solutions



Product Overview



EXCEL FLUID GROUP is a premier manufacturer of complete vault-less pump station enclosures that give you full access and control of your lift station equipment without the hassles of confined space entry.

Built with a rugged aluminum housing and features designed for operational ease, the No-Vault Pump Station is by design, one of the most versatile units in the Industry today.

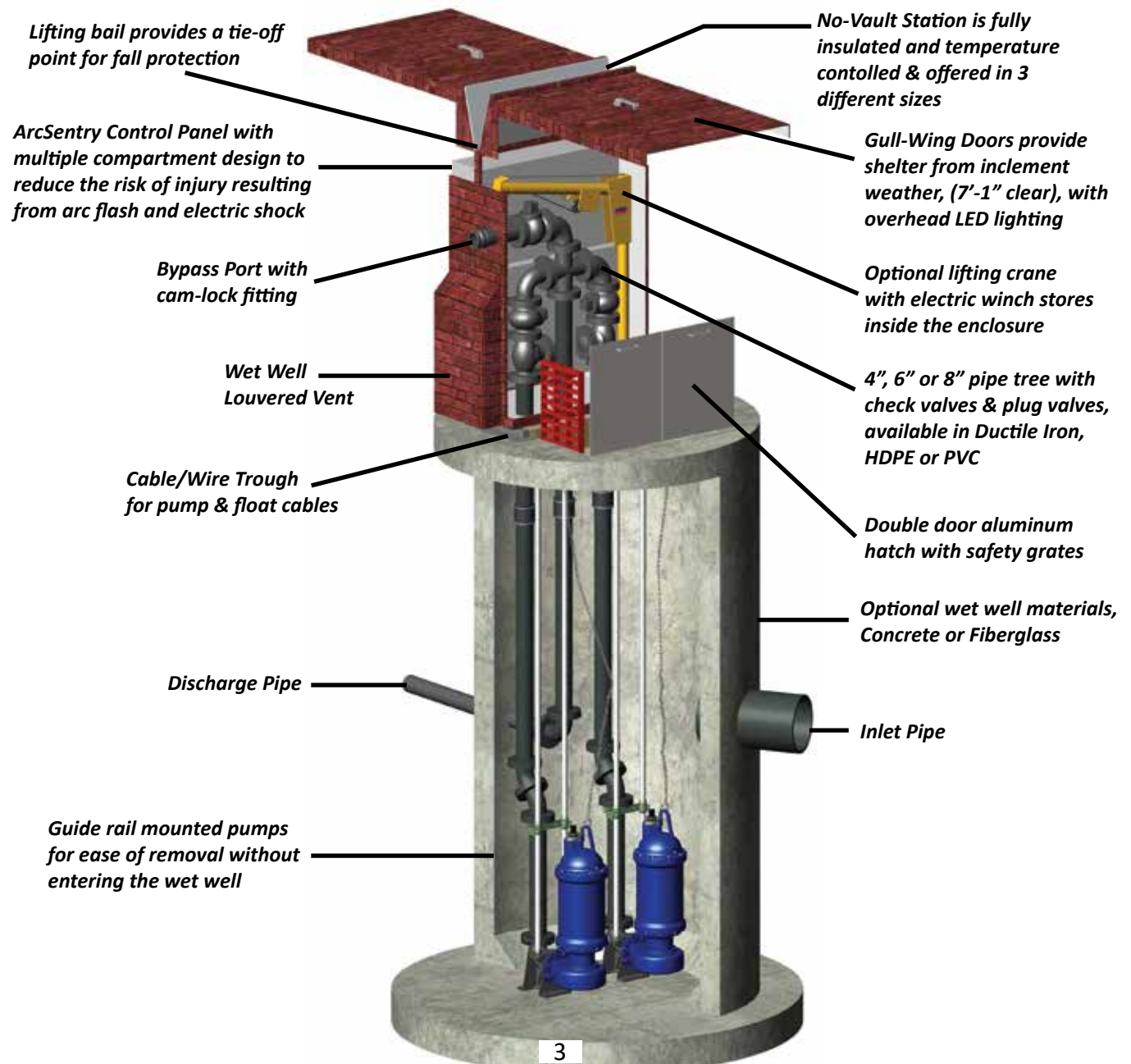
The No-Vault Pump Station represents a modern approach to Water and Wastewater Management. Our engineering team can modify standard construction features to fit almost any special situation.

EXCEL FLUID GROUP provides the advantage of a single-source supplier accommodating all brands of pumps and the No-Vault Pump Station can be mounted on concrete or fiberglass basins with your choice of controls.

Safety

A sewage wet well is a very dangerous confined space that has claimed many lives in years past. According to OSHA, about 90 deaths involving confined spaces occur every year. This places a special obligation and responsibility on all those involved in the selection and design of pump stations, as well as servicing and installing pump stations. In addition, Safety and Service Directors are responsible for the safety of their Maintenance Personnel which behooves them to eliminate as many hazards as possible from their collection systems.

EXCEL FLUID GROUP has worked with municipalities throughout North America to develop the Excel No-Vault Pump Station to minimize risk by providing a well designed, safe pump station where maintenance can be performed without entering the wet well and eliminates the below grade valve vault.

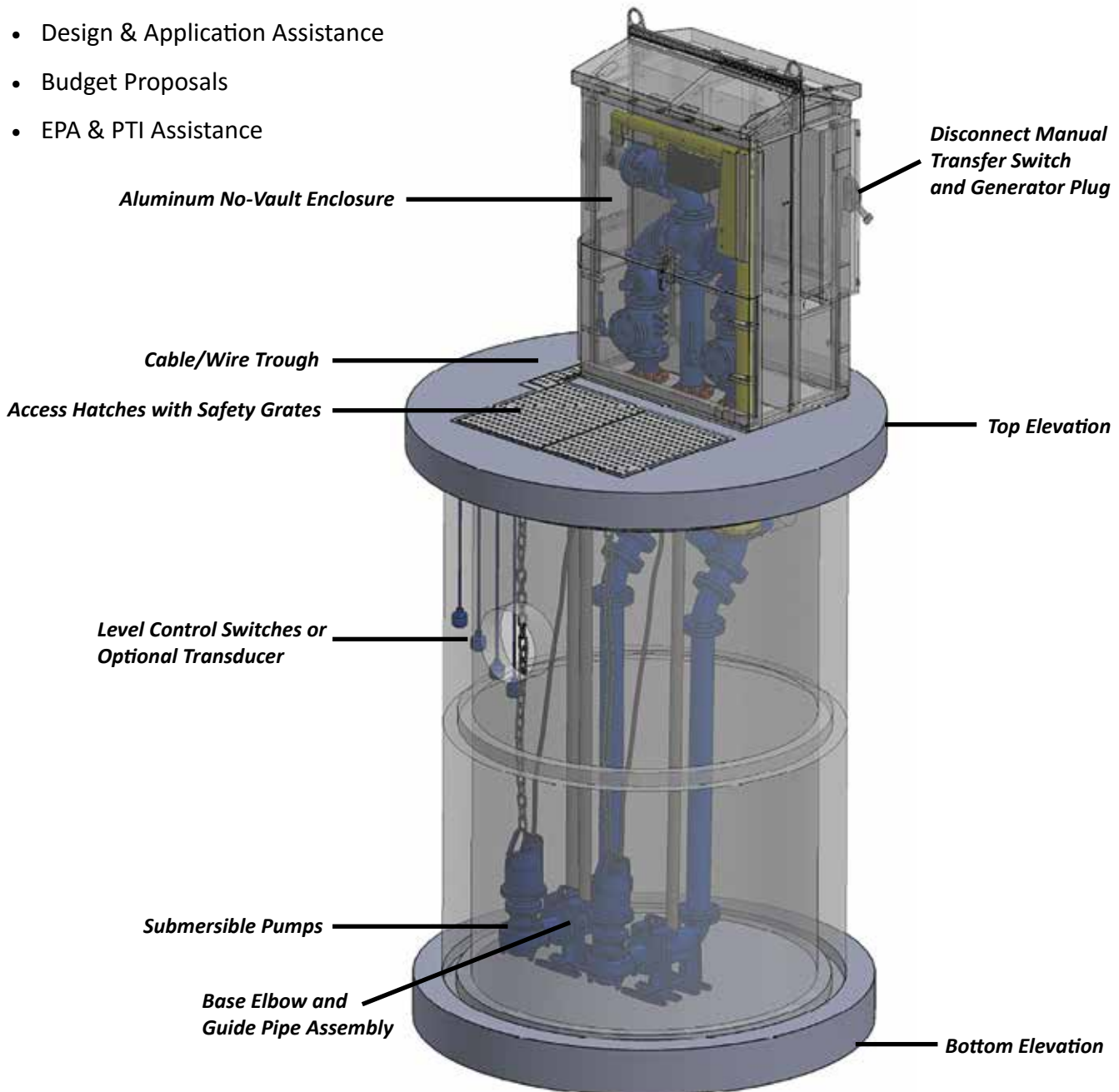


Application & Design

The Excel No-Vault design incorporates the valves and lift station controls within the footprint of the main wet well. For installation in areas with limited space the Excel No-Vault provides all of the features commonly found in conventional lift stations.

EXCEL FLUID GROUP invites you to discuss specific projects that are in initial planning or design stage, and our engineering team will assist you by providing the following services:

- Solidworks or AutoCAD Drawings
- CSI Master Format Specifications
- Design & Application Assistance
- Budget Proposals
- EPA & PTI Assistance



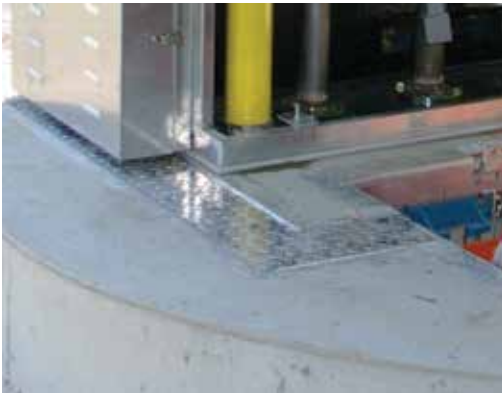
Benefits



Above Ground Enclosure:
Eliminates confined space safety hazards and reduces site space requirements



Arc-Sentry Control Panel:
Design reduces arc flash hazards and includes user friendly controls



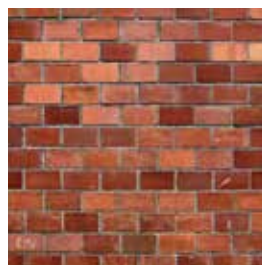
Cable/Wire Trough:
Simplifies pump installation and maintenance and eliminates the need for underground electrical conduit or junction box in wet well



Electrical Plugs and Receptacles:
Ensures correct pump rotation and reduces installation, maintenance and service time

Exterior No-Vault Covering Options

The No-Vault Pump Station is offered with custom aesthetics to blend into its surrounding environment. This makes it a first choice for many developers, engineers and communities.



Case Studies

Village of Versailles

Client's Objective: Pump Station Visual Impact

Pump Type: Barnes Explosion-Proof
Solids-Handling Pump with Vortex Impeller

Horsepower: 7.5

Voltage: 230

Phase: 3

Flow Rate: 265 GPM @ 41 TDH



Washington County

**Client's Objective: Pump Station Visual Impact and
Future Expansion Capability**

Pump Type: Barnes Submersible Grinder Pumps

Horsepower: 5

Voltage: 230

Phase: 1

Flow Rate: 100 GPM @ 90 TDH



City of Oberlin

**Client's Objective: Retrofit and Elimination of
Confined Space Entry**

Pump Type: Barnes Explosion-Proof Submersible
Grinder Pump

Horsepower: 3

Voltage: 200

Phase: 3

Flow Rate: 50 GPM @ 40 TDH



Services & Benefits

EXCEL FLUID GROUP focuses on designing and delivering pump stations that reduce total installation costs, while providing exceptional end user benefits and operational safety. Excel Fluid Group specifically provides the following services and benefits to the personnel that are involved in pump station design, installation and operation.

Design Engineers

- Provide application assistance from initial design through to final installation
- Supply equipment specifications and AutoCAD/SolidWorks drawings
- Offer assistance for EPA Permit to Install “PTI” applications
- Provide project budgetary proposals
- Save on electrical design, equipment and installation costs
- Offer solutions that are created by industry demands and designed to meet budgets

Developers

- Provide pump stations that require less land easements
- Offer exceptional value for money
- Reduced long-term service costs
- Best option for conserving real estate
- Offer aesthetically appealing pump stations that blend with natural landscape

Municipalities

- Operational Safety is paramount in pump station offerings
- Pump stations eliminate confined space requirements
- Pump stations designed to provide easy access to controls
- Save money from annual budgets by reducing maintenance costs
- Operational convenience and ease of maintenance

Installation Contractors

- Single source responsibility for pump stations reduces vendor management
- Join contractor’s team to provide end user a complete solution
- Reduces electrical scope of work and costs for installer
- Reduced by-pass pumping time and requirements
- Faster installation than conventional stations
- Factory assembly and testing reduces field startup challenges
- Start-up and operator training services

EXCEL

FLUID GROUP, LLC

4548 Industrial Parkway, Cleveland, OH 44135 | phone: 800-892-2009 | fax: 216-941-1500
sales@excelfluidgroup.com | www.excelfluidgroup.com

