

APPLICATION OVERVIEW:

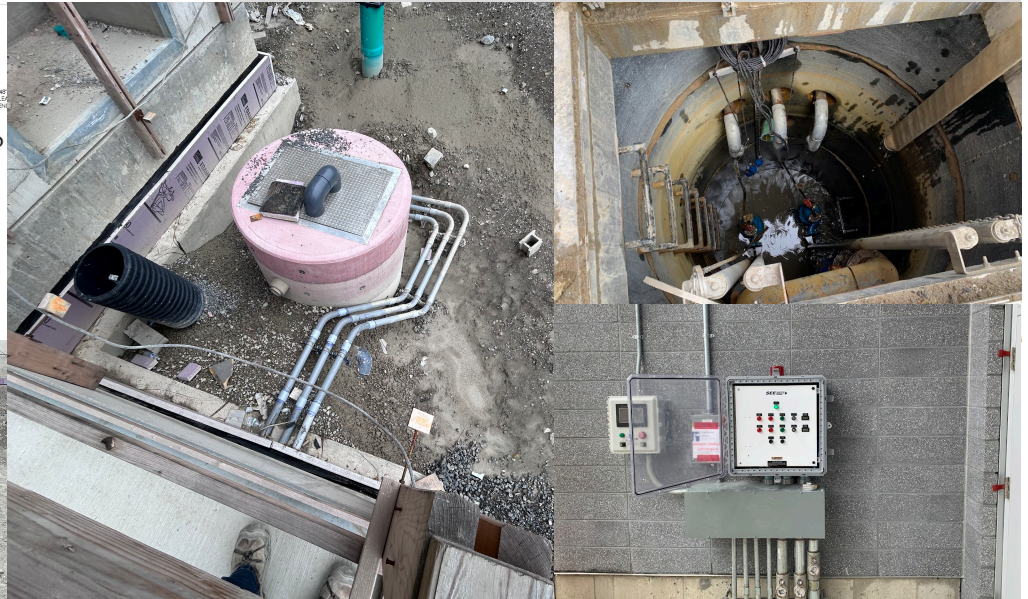
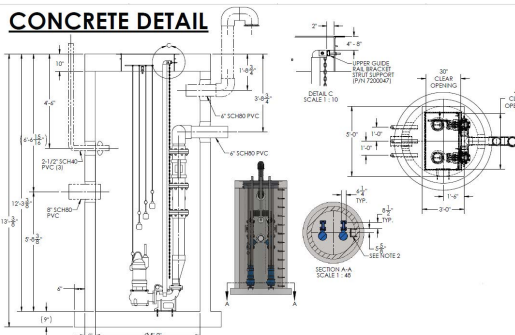
In collaboration with BKG Industries and HDR, we designed an sanitary pump station for the Pittsburgh International Airport.

PUMP STATION DETAILS:

Our team constructed this prefabricated concrete pump station, measuring 12 feet deep. Excel Fluid Group factory-assembled all internal components within the wet well, including piping and valves. The system features two explosion-proof Barnes SITHE chopper pumps, all managed by an Excel duplex control panel.

INSTALLATION:

The installation was completed by BKG Industries with the oversight of Excel Fluid Group as shown below:



May 2024

Pittsburgh, PA

Pittsburgh International Airport



PUMP SYSTEM

EXCEL Concrete Pump Station



INSTALL DATE

April 2024



OPERATIONAL IMPROVEMENT

Compact Pump Station Footprint



SERVICE AREA

Pittsburgh International Airport



PITTSBURGH
INTERNATIONAL AIRPORT

Design-Build Pump Stations