



EXCEL FLUID GROUP, LLC

## APPLICATION OVERVIEW:

We worked with Manhard Consulting to design and build a pump station for the CenterPoint Container Yard. They were looking for a design that focused on a compact footprint and elimination of confined space entry.

## PUMP STATION DETAILS:

We prefabricated a 6 ft. diameter by 28 ft. deep HDPE wet well. This was an ideal choice as it reduces excavation requirements compared to traditional pump station applications. A NoVault NV2 pump station was included in the package and it arrived to site prefabricated with the piping, valves, and control panel all enclosed. The pumps selected were two 15 HP Barnes explosion-proof chopper pumps rated for 212 GPM @ 98.9 TDH. An emergency generator with a manual transfer switch was included as well.

## INSTALLATION:

The installation was completed by Cecchin Site Utilities with oversight from Excel Fluid Group as shown below.

*Ellwood, IL*

### *CenterPoint Container Yard Pump Station*



#### PUMP SYSTEM

*HDPE NoVault™ Pump Station*



#### INSTALL DATE

*December 2022*



#### OPERATIONAL IMPROVEMENT

*Long Term Solution with Ease of Install*



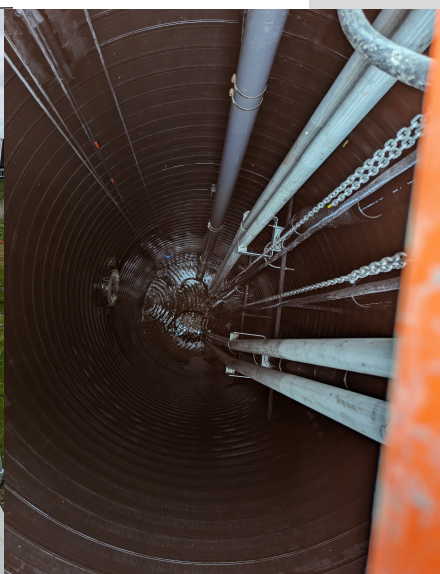
#### SERVICE AREA

*Elwood, IL CenterPoint Container Yard*



**Manhard**  
CONSULTING

 **CenterPoint**



January 2023

**Design-Build Pump Stations**